

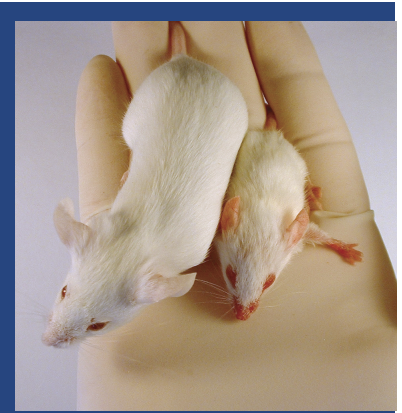
## Laboratory Safety Working with Small Animals

All procedures on animals should be performed by properly trained personnel. By using safe work practices and appropriate personal protective equipment (29 CFR Part 1910 Subpart I), workers can minimize the likelihood that they will be bitten, scratched, and/or exposed to animal body fluids and tissues.

### Use Safe Work Practices

- Avoid eating, drinking, smoking, handling contact lenses, applying cosmetics, or taking or applying medicine.
- Avoid touching your mouth, nose and eyes.
- Avoid using sharps whenever possible. Be extremely careful when using a needle and syringe or when using sharps during necropsy (autopsy) procedures. Never remove, recap, bend, break, or clip used needles from disposable syringes. Use safe needles whenever possible.
- Never use your mouth to pipette liquids; only use mechanical pipetting devices.
- Keep doors to rooms holding research animals closed.
- Perform procedures carefully to reduce the possibility of creating splashes or aerosols.
- Restrict operations that generate hazardous aerosols to biological safety cabinets or other ventilated enclosures, such as animal bedding dump stations.
- Clean up all spills immediately.
- Promptly decontaminate work surfaces when procedures are completed and after surfaces are soiled by spills of animal material or waste.
- Properly dispose of animal waste and bedding.
- Remove gloves and wash your hands after handling animals or animal tissues and before leaving areas where animals are kept.

*continued on page 2*



**Promptly decontaminate work surfaces when procedures are completed and after surfaces are soiled by spills of animal material or waste.**

**For assistance, contact us. We can help. It's confidential.**



**Occupational Safety  
and Health Administration  
www.osha.gov 1-800-321-6742**

## Laboratory Safety Working with Small Animals

*continued from page 1*

- Report all incidents and equipment malfunctions to your supervisor.

### **Wear Appropriate Personal Protective Equipment (PPE)**

- Wear all required PPE identified by your employer based on the activity performed.
- Wear gloves designed to resist puncture from animal bites.
- Wear eye protection. This will not only protect your eyes from potential scratches, but also will protect them from direct contamination by animal secretions or indirect contamination from materials contaminated with animal secretions.
- Wear head/hair covering to protect against accidental sprays or splashes.
- Wear respiratory protection, if required. NIOSH-certified respirators that are properly selected and fitted will protect you from small particle aerosols.

**Wear all required protective equipment identified by your employer based on the activity performed.**

For assistance, contact us. We can help. It's confidential.



**Occupational Safety  
and Health Administration**  
[www.osha.gov](http://www.osha.gov) 1-800-321-6742