



Author Proof

# Tumor Infiltrating Lymphocytes as a Prognostic and Predictive Biomarker in Breast Cancer

Murali Janakiram, Hina Khan, Susan Fineberg,  
Xingxing Zang and Joseph A. Sparano

## Abstract

Tumor infiltrating lymphocytes (TILs) have been recognized in various cancers and may reflect a host immune response to malignant cells. TILs are a heterogeneous population of various types of mononuclear cells, including CD8 or CD4 + T cells and their subsets, B cells, myeloid derived suppressor cells (MDSC), macrophages, and other cells. Immunosuppressive factors in the tumor microenvironment (TME) that inhibit recruitment and function of TILs include immunosuppressive cells, cytokines secreted by tumor or mesenchymal cells, and co-inhibitory ligands expressed by tumor cells. Despite this complex interplay of immune cells and the TME, higher TIL density is associated with favorable prognosis in certain breast cancer subtypes, including HER2 overexpressing cancers, and “triple negative” cancers that do not express the estrogen and progesterone receptors or overexpress HER2. TILs infiltrating the tumor stroma (sTILs) are associated with higher rates of complete pathologic response to neoadjuvant chemotherapy, decreased recurrence and improved survival in early stage triple negative and HER2-positive breast cancer treated with adjuvant systemic therapy. An international working group has published guidelines on reporting TILs in pathology specimens. In this chapter we review the composition of TILs, mechanisms of immune evasion, recommendations for TILs measurement,

Murali Janakiram and Hina Khan are contributed equally to this work.

M. Janakiram · H. Khan · X. Zang · J. A. Sparano (✉)  
Departments of Medicine, Montefiore Medical Center, Albert Einstein College of Medicine, 1695 Eastchester Road, Bronx, NY 10461, USA  
e-mail: JSPARANO@montefiore.org

M. Janakiram · H. Khan · X. Zang · J.A. Sparano  
Departments of Oncology, Montefiore Medical Center, Albert Einstein College of Medicine, 1695 Eastchester Road, Bronx, NY 10461, USA

S. Fineberg  
Departments of Pathology, Montefiore Medical Center, Albert Einstein College of Medicine, 1695 Eastchester Road, Bronx, NY 10461, USA

M. Janakiram · X. Zang  
Departments of Microbiology and Immunology, Montefiore Medical Center, Albert Einstein College of Medicine, 1695 Eastchester Road, Bronx, NY 10461, USA



and data supporting use of TILs as a prognostic and predictive biomarker in breast cancer.

**Keywords**

Tumor infiltrating lymphocytes · CD8 · CD4 · MDSC

**12.1 Introduction**

It has been recognized for decades that some primary breast cancers are associated with infiltration by lymphocytes, often referred to as “tumor infiltrating lymphocytes”, or “TILs”. This phenomenon was first described in medullary carcinoma of the breast, an uncommon subtype of poorly differentiated invasive carcinoma characterized by dense lymphocytic infiltration, circumscription, syncytial growth and absence of estrogen receptor (ER), progesterone receptor (PR) expression and HER2 overexpression, and a relatively favorable prognosis (Moore and Foote 1949; Richardson 1956; Bloom et al. 1970). Recent reports have noted that lymphocytic infiltration to be more prevalent in HER2 overexpressing and “triple negative” invasive ductal carcinomas, and distinguished between lymphocytic infiltration of the tumor (iTILs) and stroma (sTILs) (Loi et al. 2013). In addition, there is a consistent body of evidence indicating a strong correlation between the presence of TILs, especially sTILs, in the primary tumor and a significantly reduced risk of breast cancer recurrence and mortality in both HER2 overexpressing (Dieci et al. 2015) and triple negative breast cancer (TNBC) (Loi et al. 2013; Dieci et al. 2015; Adams et al. 2014). An association between TILs in residual tumor after neoadjuvant chemotherapy and prognosis has also been reported (Dieci et al. 2014), and higher TIL density in diagnostic pre-treatment core biopsies is also predictive of pathologic complete response to neoadjuvant chemotherapy (Denkert et al. 2010, 2015; West et al. 2011; Ono et al. 2012; Mao et al. 2014). This strong association between TILs and clinical outcomes has led to an expert group providing guidelines for evaluating and scoring TILs in

breast cancer, with the ultimate goal of capturing the prognostic information in an accurate and reproducible manner that provides sufficient analytic validity to permit further investigation and eventually clinical application (Salgado et al. 2015b). Although the infiltrating cells comprising the infiltrate have been dubbed “lymphocytes”, they are identified morphologically as mononuclear cells, and hence actually consist of a mixed population of cells including not only cytotoxic and suppressor T lymphocyte and B lymphocyte populations, but also natural killer (NK) cells, plasma cells, macrophages, dendritic cells, and myeloid derived progenitor cells (Fig. 12.1). With the emergence of immune checkpoint blockade as a new strategy to treat a wide variety of cancers, there has also been interest in more precisely characterizing the composition of the TIL population with the ultimate goal of developing predictive biomarkers that identify tumors more susceptible to eradication by immune checkpoint blockade or other immunotherapeutic approaches.

**12.2 Characterization of TILs in Breast Cancer**

As described above, the International TILs Working Group is an expert panel that has provided recommendations for evaluation of TILs in breast cancer (Salgado et al. 2015b). The recommendations of the panel are summarized in Table 12.1, and several key recommendations are described herein. First, the panel recommended that all mononuclear cells within the border of the primary invasive tumor be identified as TILs in whole sections excluding areas with necrosis, crush artifact, or hyalinization; the panel did not recommend use of tissue

Author Proof

AQ1

79  
80  
81  
82  
83  
84  
85  
86  
87  
88  
89  
90  
91  
92  
93  
94  
95  
96  
97  
98  
99  
100  
101  
102  
103  
104  
105  
106  
107  
108  
109  
110  
111  
112  
113  
114  
115





**Table 12.1** TIL working group recommendations for evaluating TILs in breast cancer

*Specimen source*

- Full sections are preferred over biopsies whenever possible. Cores can be used in the pre-therapeutic neoadjuvant setting; currently no validated methodology has been developed to score TILs after neoadjuvant treatment
- One Section (4–5  $\mu\text{m}$ , magnification  $\times \sim 200\text{--}400$ ) per patient is currently considered to be sufficient

*Methodology for characterizing TILs*

- TILs should be evaluated within the borders of the invasive tumor
- A full assessment of average TILs in the tumor area by the pathologist should be used. Do not focus on hotspots
- Exclude TILs outside of the tumor border and around DCIS and normal lobules. Exclude TILs in tumor zones with crush artifacts, necrosis, regressive hyalinization as well as in the previous core biopsy site
- All mononuclear cells (including lymphocytes and plasma cells) should be scored, but polymorphonuclear leukocytes are excluded
- TILs should be reported for the stromal compartment (= % stromal TILs). The denominator used to determine the % stromal TILs is the area of stromal tissue (i.e. area occupied by mononuclear inflammatory cells over total intratumoral stromal area), not the number of stromal cells (i.e. fraction of total stromal nuclei that represent mononuclear inflammatory cell nuclei)
- The percentage of stromal TILs is a semiquantitative parameter for this assessment, for example, 80 % stromal TILs means that 80 % of the stromal area shows a dense mononuclear infiltrate. For assessment of percentage values, the dissociated growth pattern of lymphocytes needs to be taken into account. Lymphocytes typically do not form solid cellular aggregates; therefore, the designation ‘100 % stromal TILs’ would still allow some empty tissue space between the individual lymphocytes

*Reporting results*

- Pathologist should report their scores in as much detail as the pathologist feels comfortable with
- The working group’s consensus is that TILs may provide more biological relevant information when scored as a continuous variable, and thus should TILs should be assessed as a continuous parameter (as deciles)
- Lymphocyte predominant breast cancer can be used as a descriptive term for tumors that contain ‘more lymphocytes than tumor cells’. However, the thresholds vary between 50 % and 60 % stromal lymphocytes

*Clinical implications of results*

- No formal recommendation for a clinically relevant TIL threshold(s) can be given at this stage. The consensus was that a valid methodology is currently more important than issues of thresholds for clinical use, which will be determined once a solid methodology is in place

Adapted from Salgado et al. (2015b)

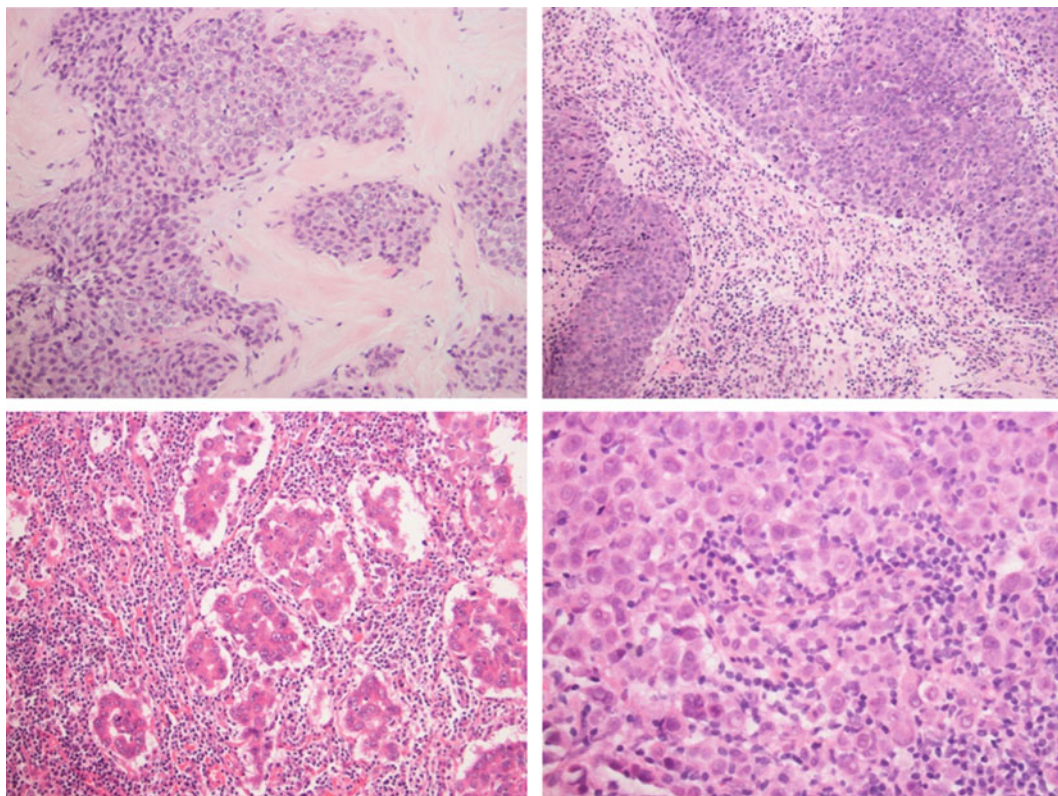
the clinical utility of this information remains uncertain. For example, there is currently insufficient level of evidence to spare chemotherapy based on TIL assessment, or to select for patients most likely to benefit from immune checkpoint blockade. In addition, few studies have evaluated the intra and inter observer reproducibility, or analytic validity, of TILs assessment. For example, in the report by Adams et al., inter observer correlation was evaluated in a subset of 99 evaluable cases. Rates of agreement within 10

percentage points between two expert breast pathologists were 85 % (95 % confidence intervals [CI] 76–91 %) for sTILs and 97 % (95 % CI 91–99 %) for iTILs. If categorical cut points from the Kaplan-Meier analysis were used, the kappa statistic showed moderate agreement between the two pathologists (sTILs, 0.40; iTILs, 0.43) (Adams et al. 2014). Hence further studies or guidelines are required to study methods to improve interobserver agreement in TIL evaluation in breast cancer.

173  
174  
175  
176  
177  
178  
179  
180  
181  
182  
183

Author Proof





**Fig. 12.2** Various levels of TIL infiltration in different breast cancer samples are shown. *Top left* sTILs < 1 % (20x)—The stroma is clearly visible in pink and is devoid of TILs, *Top right* sTILs—50 % (20x)—The stroma is visible and has a considerable infiltration of TILs, *Bottom*

*left* sTILs—90 % (20x)—Intervening stroma is not seen and is nearly replaced by lymphocytes, *Bottom right* Intratumoral TILs (40x)—The lymphocytes are in direct contact with the tumor cells with no intervening stroma

### 12.3 TILs Are an Immunologic Response to Tumor Neoantigens

Tumors occurring in subjects harboring germ-line BRCA1 mutations are associated with more TILs than sporadic breast cancers (Lakhani et al. 1998). BRCA-mutation associated cancers have a higher mutational burden than sporadic cancers due to impaired homologous recombination and consequently less error free DNA repair. This results in a greater neoantigen burden and hence induces an immune response. Variability in the somatic mutational burden of cancer has been described, with tumors associated with exposure to tobacco and sunlight (e.g., lung

cancer and melanoma, respectively) associated with the highest mutational burden, and breast cancer having a mutational burden in the intermediate range when considered in the context of all human cancers that have been characterized thus far (Alexandrov et al. 2013). Non-BRCA-associated TNBCs are also frequently characterized by defective DNA repair mechanisms due to germ-line defects in other DNA repair pathways (e.g., PALB2, RAD51) and BRCA1 promoter hypermethylation. Assays that identify tumors harboring “genomic scars” as a consequence of these deficiencies are likewise characterized by greater TIL density, providing additional evidence supporting the link between mutational burden and immune response (Telli et al. 2015). On the other hand, tumors harboring defective

184  
185  
186  
187188  
189  
190  
191  
192  
193  
194  
195  
196  
197  
198  
199200  
201  
202  
203  
204  
205  
206  
207  
208  
209  
210  
211  
212  
213  
214  
215  
216



DNA repair mechanisms, whether due to germ-line or somatic alterations, are more sensitive to DNA damaging agents such as platinum, alkylating agents, and anthracyclines. Thus, it is unclear at this time as to whether the more favorable prognosis associated with TILs represents an effective immune response, greater sensitivity of tumors with high TILs to cytotoxic therapy, or both. Higher mutational burden has been shown to correlate with clinical response to anti-PD1 directed therapy in non-small cell lung cancer (Rizvi et al. 2015), suggesting that TILs may serve as a surrogate predictive biomarker for response to immune checkpoint blockade in a variety of cancers.

## 12.4 Composition of TILs and Subpopulations

The diagnosis of clinical cancer represents escape from cancer immunoediting, an immunologic process that reduces cancer burden through elimination or equilibrium (Dunn et al. 2004). Although the escape from or failure of this process results in the clinical detection of cancer, the association between TILs and prognosis suggests that host immunity is still relevant after cancer is diagnosed. TILs are composed of a heterogeneous population of cells having both immunostimulatory and immunosuppressive effects, and the balance of these effects contribute to tumor tolerance (Quezada et al. 2011).

The subpopulations of cells are shown in Fig. 12.1. Some cells in the TIL population suppress tumor progression, including CD8+ T cells, helper CD4+ T (Th1) cells, natural killer (NK) cells, whereas others promote tumor progression, including Th2 cells, myeloid derived stem cells, and T regulatory (Tregs) cells. Subpopulations of macrophage and dendritic cells can suppress (M1, DC1) or promote tumor (M2, DC2) tumors, while other cell populations may be either tumor suppressive or promoting, including B cells and Th17 cells (Salgado et al. 2015b). Although neutrophils are not considered in characterizing TILs, they may likewise have

either tumor suppressing or promoting subpopulations (Sagiv et al. 2015).

TIL subpopulations may be evaluated using a variety of methodologies, including immunohistochemistry, RNA in situ hybridization, and flow cytometry. Gene expression profiling has identified tumor associated immune signatures that reflect the composition of the subpopulations. To date, classification of subpopulations has largely been described using immunohistochemistry including a panel of antibodies directed at CD4, CD8, CD25, and FOXP3+. Using this methodology, the major subtypes of immunosuppressive cells constituting TILs include T regs (CD4 + CD25+ FOXP3+) and myeloid derived suppressor cells (MDSC) (Jiang and Shapiro 2014). Tregs produce RANKL which binds to RANK on human breast cancer cell lines and promotes lung metastases in mouse models (Tan et al. 2011). Depletion of Tregs with a vaccine and low dose cyclophosphamide results in increased cytolytic activity of T cells in Her-2 Neu transgenic mice (Weiss et al. 2012). MDSC suppress T cell proliferation through production of reactive oxygen species, disrupt binding of antigen specific peptides to CD8 T cells by inactivating tyrosinases in the TCR-CD8 (T cell receptor-CD8) complexes, and inhibit antigen presentation by tumor cells via nitration of tumor MHC class I expression (Jiang and Shapiro 2014). Hence these cell populations through pleiotropic effects can prevent or suppress an effective immune response.

## 12.5 The Tumor Microenvironment and TIL Function

TILs comprise only one component of the tumor microenvironment (TME), which also includes mesenchymal cells, and extracellular matrix/stroma. The extracellular matrix functions as a scaffold for tissue architecture, and also provides biochemical and biomechanical signals that influence cell growth, survival, migration and differentiation, as well as vascular development and immune function, and hence modulates the

Author Proof

262  
263  
264  
265  
266  
267  
268  
269  
270  
271  
272  
273  
274  
275  
276  
277  
278  
279  
280  
281  
282  
283  
284  
285  
286  
287  
288  
289  
290  
291  
292  
293  
294  
295  
296  
297  
298  
299  
300  
301  
302  
303  
304  
305  
306



hallmarks of cancer (Pickup et al. 2014). Thus, crosstalk between TIL subpopulations and other components of the TME, mediated in part by chemokines and cytokines, results in a complex interplay that can influence the balance between tumor promotion and suppression, as described below.

*Cytokines and chemokines:* The stromal cells and other immune cells secrete various cytokines that profoundly influence different subpopulations of immune effector cells. For example, TGF-beta induces transcriptional repression of genes in CD8+ T cells resulting in impaired cytolytic activity (Thomas and Massague 2005). Products of altered steroid metabolism can accumulate and inhibit CCR7 thus preventing dendritic cell maturation and translocation into the lymphoid organs (Villablanca et al. 2010). Tumors secrete soluble ligands such as MHC class I polypeptide-related sequence (MIC) that deplete T cell receptors and attenuate response of specific effector T cells in response to tumor antigens (Groh et al. 2002). Thus cytokines secreted in the TME can inhibit presentation of antigens to T cells and can also inhibit responses of T cells to the tumor. Other cytokines, most notably interferon-gamma, play an important role in enhancing cell immunity.

*Co-inhibitory and co-stimulatory receptors and ligands:* T cell activation depends on recognition of antigens on host antigen presenting cells (APCs) and the presence of a simultaneous co-stimulatory or co-inhibitory signal delivered through the CD28 –B7 family of receptor-ligand interaction between T cells and APC or malignant cells. Certain B7 ligands, including PD-L1, B7-H3, B7x and HHLA2 inhibit T cell responses when expressed on APCs or tumor cells. Expression of these ligands in breast cancer and other cancers has been associated with unfavorable clinical features (Janakiram et al. 2012; 2014). For example, PD-L1 expression on human pancreatic and ovarian cancers is inversely correlated with CD8 + TILs (Ohaegbulam et al. 2015). Several studies also show an inverse correlation of another co-inhibitory ligand B7x and TILs in various cancers. Tumor cell B7x expression is inversely

correlated with the intensity of TILs in renal cell carcinoma (Zhang et al. 2013), with the number of CD3+ and CD8+ TILs in uterine endometrioid carcinoma (Miyatake et al. 2007) and with the densities of CD3+ TILs in tumor nest and CD8+ TILs in tumor stroma in esophageal carcinoma (Chen et al. 2011). These results suggest that tumor-expressed B7x may be important in limiting TILs infiltration. The expression of coinhibitory receptor PD-1 on TILs has also been shown to be associated with decreased overall survival in breast cancer (Sun et al. 2014; Muenst et al. 2013). In summary, TILs recruitment and function is influenced by a complex interplay of neoantigens and co-inhibitory ligands on the tumor, coinhibitory receptors on TILs, subpopulation of cells in the infiltrate and the tumor microenvironment.

---

## 12.6 Clinical Validity of TILs as a Prognostic Biomarker in Patients with Breast Cancer Treated with Adjuvant Chemotherapy

The results of studies evaluating the association between TILs and prognosis in operable breast cancer are summarized in Table 12.2.

*Relationship between TILs and Breast Cancer Subtype:* Loi et al. (2013) first described the variability of TILs by breast cancer subtype, and the strong association between TILs and prognosis in TNBC. TILs were evaluated independently by two expert pathologists in primary tumor specimens from 2009 patients with axillary node-positive breast cancer enrolled on the BIG 02-98 adjuvant phase III trial comparing anthracycline chemotherapy given without a taxane (doxorubicin followed by cyclophosphamide, methotrexate, and fluorouracil (CMF) or doxorubicin plus cyclophosphamide followed by CMF), concurrently or sequentially with a taxane (doxorubicin plus docetaxel followed by CMF or doxorubicin followed by docetaxel followed by CMF). iTILs and sTILs were found to be significantly higher in TNBC and HER2-positive breast cancer compared with

Author Proof

356  
357  
358  
359  
360  
361  
362  
363  
364  
365  
366  
367  
368  
369  
370  
371  
372  
373  
  
374  
375  
376  
377  
378  
379  
  
380  
381  
382  
383  
384  
385  
386  
387  
388  
389  
390  
391  
392  
393  
394  
395  
396  
397  
398  
399  
400  
401



**Table 12.2** Clinical studies of TILs as a biomarker in adjuvant therapy of breast cancer

Trial—author and reference	No. of samples analyzed	Method — H&E/IHC	TILs analyzed: i-TILs, s-TILs or t-TILs	Lymphocyte predominant breast cancer (LPBC)	Adjuvant Therapy used	Survival parameter in High TILs subgroup
Loi et al. (2013)	256	H&E	s-TILs and i-TILs	High TILs (>50 %) were seen in 10.6 % patients	Anthracycline based combination regimens with taxanes	<ul style="list-style-type: none"> <li>• Every 10 % increase in i-TILs and s-TILs were associated with 17 % (<math>p = 0.1</math>) and 15 % (<math>p = 0.025</math>) reduced risk of relapse, and 27 % (<math>p = 0.03</math>) and 17 % reduced risk of death (<math>p = 0.023</math>).</li> <li>• For high versus low TILs (&gt;50 %)                             <ul style="list-style-type: none"> <li>– DFS-HR: 0.30, 95 % CI: 0.11–0.81</li> <li>– OS-HR: 0.29, 95 % CI: 0.091–0.92</li> </ul> </li> <li>• With every 10 % increase in s-TILs, a 14 % reduction of risk of recurrence or death (<math>p = 0.02</math>), 18 % reduction of risk of distant recurrence (<math>p = 0.04</math>), and 19 % reduction of risk of death (<math>p = 0.01</math>) was seen. sTILs were an independent prognostic marker of DFS, DRFI, and OS</li> <li>• For presence vs absence of sTILs                             <ul style="list-style-type: none"> <li>– HR: 0.69, 95 % CI: 0.49–0.98</li> </ul> </li> <li>• For presence vs absence of iTILs                             <ul style="list-style-type: none"> <li>– HR: 0.69; 95 % CI: 0.45–1.06</li> </ul> </li> </ul>
Adams et al. (2014)	481	H&E	s-TILs and i-TILs	High TILs (≥50 %) were seen in 4.4 % patients	AC, AC followed by taxane or CMF	<ul style="list-style-type: none"> <li>• Each 10 % increase in i-TILs or s-TILs was associated with 14 and 13 % reduction in risk relapse in the high and low-TILs groups</li> <li>• For high versus low TILs (&gt;50 %)                             <ul style="list-style-type: none"> <li>– DFS-HR: 0.43, 95 % CI: 0.20–0.94</li> <li>– 10 years DFS rate was 85 and 53 %</li> </ul> </li> <li>• For each 10 % increase in sTILs there was 13 % decrease in risk of distant recurrence in TNBC; and improvement in DFS. No difference in OS was observed</li> <li>• For high versus low TILs (≥50 %)                             <ul style="list-style-type: none"> <li>– DFS-HR: 0.77, 95 % CI: 0.61–0.98</li> </ul> </li> </ul>
Dieci et al. (2015)	199	H&E	s-TILs and i-TILs	High-TILs (>50 %) were seen in 5 % patients	FEC or FAC compared to no chemotherapy	<ul style="list-style-type: none"> <li>• For each 10 % increase in sTILs there was 13 % decrease in risk of distant recurrence in TNBC; and improvement in DFS. No difference in OS was observed</li> <li>• For high versus low TILs (≥50 %)                             <ul style="list-style-type: none"> <li>– DFS-HR: 0.77, 95 % CI: 0.61–0.98</li> </ul> </li> </ul>
Loi et al. (2014b)	134	H&E	s-TILs and i-TILs	TILs used as continuous variable, High TILs defined as ≥50 % for statistical analyses	Docetaxel or vinorelbine X3 cycles, followed by three cycles of FEC	<ul style="list-style-type: none"> <li>• For each 10 % increase in sTILs there was 13 % decrease in risk of distant recurrence in TNBC; and improvement in DFS. No difference in OS was observed</li> <li>• For high versus low TILs (≥50 %)                             <ul style="list-style-type: none"> <li>– DFS-HR: 0.77, 95 % CI: 0.61–0.98</li> </ul> </li> </ul>

(continued)





**Table 12.2** (continued)

	Trial—author and reference	No. of samples analyzed	Method—H&E/IHC	TILs analyzed: i-TILs, s-TILs or t-TILs	Lymphocyte predominant breast cancer (LPBC)	Adjuvant Therapy used	Survival parameter in High TILs subgroup
HER2 +	Loi et al. (2014b)	209	H&E	s-TILs and i-TILs	TILs used as continuous variable, High TILs defined as $\geq 50\%$ for statistical analyses	Docetaxel or vinorelbine $\times 3$ cycles, followed by three cycles of FEC, with or without nine doses of weekly trastuzumab	<ul style="list-style-type: none"> <li>For each 10 % increase in lymphocytic infiltration, there was an 18 % decrease in relative risk of distant recurrence in patients randomized to the trastuzumab arm. Higher levels of TIL are associated with increased trastuzumab benefit in HER2+ disease</li> <li>For High versus low TILs (<math>\geq 50\%</math>) <ul style="list-style-type: none"> <li>DFS-HR: 0.96, 95 % CI 0.82–1.3</li> </ul> </li> <li>sTILs of <math>\geq 60\%</math> was associated with RFS in chemotherapy only arm, but not in trastuzumab arm. The 10 year RFS was 90.9 % for high S-TILs group in the chemotherapy arm</li> <li>10 year RFS was not significant different (80 %) in either groups in the trastuzumab arm</li> <li>For High versus low TILs (<math>\geq 60\%</math>) <ul style="list-style-type: none"> <li>10 year DFS HR: 0.23; 95 %CI: 0.073–0.73</li> </ul> </li> </ul>
	Perez et al. (2014)	945	H&E	s-TILs	High TILs ( $\geq 60\%$ ) were seen in 9.9 % patients	AC followed by Taxol with or without Trastuzumab	<ul style="list-style-type: none"> <li>10 year DFS rate was higher in the high-TIL group</li> <li>For high versus low TILs (<math>&gt;50\%</math>) <ul style="list-style-type: none"> <li>DFS-HR: 0.48; 95 % CI: 0.21–1.07</li> </ul> </li> </ul>
	Dieci et al. (2015)	112	H&E	s-TILs and i-TILs	High-TILs ( $>50\%$ ) were seen in 24 % patients	FEC or FAC compared to no chemotherapy	<ul style="list-style-type: none"> <li>High FOXP3+ TILs were associated with improved survival in the HER2 +/ER—subgroup, with co-existent CD8+ T-cell infiltrates. In CD8+ group, the presence of high levels of FOXP3 + TILs was independent of standard clinical prognostic factors</li> <li>For high versus low TILs (median) <ul style="list-style-type: none"> <li>OS-HR: 0.48, 95 % CI: 0.23–0.98</li> </ul> </li> </ul>
	Liu et al. (2014)	498	IHC—FOXP3 cells	s-TILs and i-TILs	Median used to classify high and low TILs. FOXP3 TILs ( $\geq 2$ IHC) were prevalent in 42.4 % samples	CMF, AC or FAC	<ul style="list-style-type: none"> <li>Each 10 % increase in sTILs was significantly associated with benefit with anthracycline-only regimen. In the LPBC (<math>&gt;50\%</math> TILs) phenotype, a 5-year DFS of 78.6 % was seen in the anthracycline arm versus 57.9 % DFS in the anthracycline-docetaxel arm.</li> <li>For high versus low TILs (<math>&gt;50\%</math>) <ul style="list-style-type: none"> <li>5 year DFS in LPBC—HR: 0.45; 95 % CI: 0.12–1.71</li> <li>5 year DFS in non-LPBC—HR: 2.05; 95 % CI: 1.41–2.97</li> </ul> </li> </ul>
	Loi et al. (2013)	297	H&E	s-TILs and i-TILs	High TILs ( $>50\%$ ) were seen in 11.1 % patients	Anthracycline based combination regimens with taxanes	

(continued)

**Table 12.2** (continued)

ER+/PR+	Trial—author and reference	No. of samples analyzed	Method—H&E/IHC	TILs analyzed: i-TILs, s-TILs or i-TILs	Lymphocyte predominant breast cancer (LPBC)	Adjuvant Therapy used	Survival parameter in High TILs subgroup
ER+/PR+	Dieci et al. (2015)	463	H&E	s-TILs and i-TILs	High-TILs (>50 %) were seen in 15 % patients	FEC or FAC compared to no chemotherapy	<ul style="list-style-type: none"> <li>No prognostic effect was seen in the ER +/HER2—subgroup</li> </ul>
	Liu et al. (2014)	2761	IHC—FOXP3 cells	s-TILs and i-TILs	Median used to classify high and low TILs. FOXP3 TILs (≥2 IHC) were prevalent in 27.2 % samples	CMF, AC or FAC	<ul style="list-style-type: none"> <li>High FOXP3 + TILs were associated with poor survival in ER+ breast cancers that lacked CD8+ T-cell infiltrates</li> <li>For High versus low TILs [median] — OS HR: 1.30, 95 % CI: 1.02–1.66</li> </ul>

*TILs* Tumor infiltrating lymphocytes; *sTILs* Stromal tumor infiltrating lymphocytes; *i-TILs* Intratumoral tumor infiltrating lymphocytes; *H&E* Hematoxylin and eosin; *IHC* Immunohistochemistry; *TNBC* Triple negative breast cancer; *OS* Overall survival; *HR* Hazard ratio; *CI* Confidence interval; *DFS* Disease free survival; *RFS* Recurrence free survival; *DRFI* Disease recurrence free interval; *FOXP3* Forkhead box P3; *HER2* Human epidermal growth factor receptor 2; *CMF* Methotrexate, cyclophosphamide, 5-fluorouracil; *AC* Doxorubicin and Cyclophosphamide; *FEC* 5-Fluorouracil, Epirubicin and Cyclophosphamide; *FAC* Doxorubicin, cyclophosphamide, 5-fluorouracil

ER-positive, HER2-negative breast cancer. In addition, there was no significant prognostic association in the entire population (n = 2009) or ER-positive, HER2-negative population (n = 1079).

*Relationship between TILs and Prognosis in Triple Negative Breast Cancer:* Although no association was found between TIL and prognosis in the overall population and in ER-positive, HER2-negative disease in analysis of the BIG 02-98 specimens reported by Loi et al. (Loi et al. 2013), each 10 % increase in iTILs and sTILs in the TNBC population was associated with 17 and 15 % reduced risk of relapse (adjusted  $p = 0.1$  and  $p = 0.025$ ), respectively, and 27 and 17 % reduced risk of death irrespective of chemotherapy type used (adjusted  $p = 0.035$  and  $p = 0.023$ ), respectively. This report therefore provided the first evidence indicating the strong associated between TILs and prognosis in TNBC. Adams et al. (2014) reported a confirmatory analysis that focused on 481 patients with stages I-III TNBC enrolled on two large adjuvant phase III trials (ECOG 2197 and ECOG 1199) in which all patients received anthracycline-cyclophosphamide-containing, usually in combination with a taxane. In contrast to the analysis by Loi et al., TILs were read independently rather than in tandem by two expert pathologists. Similar to the report by Loi et al., however, among the 481 tissue samples analyzed; for every 10 % increase in sTIL there was a 14 % reduction in risk of recurrence or death, 18 % reduction in risk of distant recurrence and a 19 % reduction in risk of death was seen. These two independent reports therefore demonstrated that sTILs were a strong and independent prognostic marker for disease-free survival (DFS) and overall survival (OS) in patients with stages I-III TNBC treated with adjuvant anthracycline-containing chemotherapy.

The relationship between TILs and prognosis was also evaluated retrospectively using breast cancer specimens obtained from two randomized trials comparing adjuvant chemotherapy with no chemotherapy in 817 patients with node-positive and node-negative breast cancer (Dieci et al. 2014). In the TNBC subgroup, both iTILs and

407  
408  
409  
410  
411  
412  
413  
414  
415  
416  
417  
418  
419  
420  
421  
422  
423  
424  
425  
426  
427  
428  
429  
430  
431  
432  
433  
434  
435  
436  
437  
438  
439  
440  
441  
442  
443  
444  
445  
446  
447  
448  
449  
450  
451  
452  
453  
454



sTILs were significantly associated with DFS, with each 10 % increase associated with 14 and 13 % reduction in risk of relapse (HR: 0.86, 95 % CI: 0.78–0.94 and HR: 0.87, 95 % CI: 0.80–0.94), respectively. TILs were prognostic in both the chemotherapy treated and untreated population, with no statistical interaction observed. The FinHer study was another phase III multicenter adjuvant trial that included 1010 patients with high-risk node-negative or node-positive breast cancer; in this cohort each 10 % increase in TILs was significantly associated with a 13 % decrease in risk of distant recurrence (HR: 0.77, 95 % CI: 0.61–0.98,  $p = 0.02$ ) in 134 TIL evaluable primary TNBC cases (Loi et al. 2014b). Thus, several reports have confirmed the prognostic role of increased TIL in patients with operable TNBC treated with or without adjuvant chemotherapy.

**HER2-Positive Breast Cancer:** The association between TILs and prognosis was also demonstrated in HER2-positive operable breast cancer. As previously described, the FinHer study was a multicenter phase III trial that included not only patients with TNBC, but also patients with HER2 overexpressing breast cancer who received adjuvant chemotherapy alone or in combination with trastuzumab. In 209 patients with HER2-positive breast cancer treated with adjuvant trastuzumab in the FinHER study, a 10 % increase in sTILs was associated with an increase in distant disease free survival (HR = 0.77; 95 % CI: 0.61–0.98). The association between TILs and prognosis was also analyzed in the N9831 study, which compared adjuvant chemotherapy alone or in combination with trastuzumab in HER2 overexpressing operable breast cancer (Perez et al. 2014). Lymphocyte predominant breast cancers (LPBC) with high sTILs (>60 %), which accounted for 9.9 % ( $n = 94$ ) of the population, was independently associated with improved recurrence-free survival (RFS) in patients treated with chemotherapy alone, but not in the chemotherapy plus trastuzumab group, and did not predict benefit from trastuzumab. In patients treated with chemotherapy alone, the 10 year RFS rates were 90.9% and 64.5 % for LPBC and non-LPBC

groups, respectively (HR: 0.23; 95 % CI: 0.073–0.73). Subgroup analysis from the BIG-02-98 adjuvant phase III trial of lymph node positive breast cancer patients also showed a notable benefit of increasing TILs (10 % increments) in the HER2-positive cohort treated with anthracycline-only chemotherapy without trastuzumab, although this was not seen in anthracycline and docetaxel arm. It is unclear currently why such an interaction should be present with the type of chemotherapy regimen, although a higher dose of anthracycline could be responsible for the immune mediated response. Based on all these studies, a higher TILs infiltration is predictive of outcome in HER2<sup>+</sup> breast cancer especially in the anthracycline only treated subgroup.

**ER-Positive, HER2-Negative Breast Cancer:** Data on the prognostic effect of TIL in the hormone receptor positive breast cancer groups is limited. Recent preliminary data from two ongoing randomized adjuvant trials has shown that there is no prognostic impact of TIL in the ER<sup>+</sup>/HER2<sup>-</sup> subgroup (Maria Vittoria Dieci et al. 2014).

## 12.7 Clinical Validity of TILs as a Prognostic and Predictive Biomarker in Patients with Breast Cancer Treated with Neoadjuvant Chemotherapy

Neoadjuvant chemotherapy of localized breast cancer leads to clinical responses in as many as 70–90 %, but pathological complete response (pCR), defined as a complete or near complete absence of residual tumor, is only seen in 10–25 % of patients (Fisher et al. 1998; Smith et al. 2002). pCR is a short term surrogate associated with a long-term favorable prognosis, especially in HER2-positive and TNBC (Cortazar and Geyer 2015), and is now accepted by regulatory agencies such as the United States Food and Drug Administration for accelerated approval of new agents in patients with localized breast cancer who are candidates for neoadjuvant



chemotherapy (Prowell and Pazdur 2012). Patients with residual disease have a variable prognosis, but extensive residual disease in patients with TNBC and HER-positive breast cancer appear to have a high risk of recurrence (Symmans et al. 2007). There has therefore an interest in determining the relationship between TILs in pretreatment core biopsies as a predictive biomarker for pCR in patients with neoadjuvant therapy, and as a prognostic biomarker in patients with residual disease after neoadjuvant therapy because of the variable prognosis for this population. The results of these reports are summarized in Table 12.3.

*TILs and Predicting Response to Neoadjuvant Chemotherapy:* Lymphocyte infiltration was analyzed in 1058 pre-treatment cancer tissues from the GeparDuo and GeparTrio cohorts, both of which were phase III, randomized trials assessing responses to combination neoadjuvant chemotherapy regimens. The presence of intratumoral lymphocytes, defined as >10 % stromal area infiltrated with lymphocytes, was an independent parameter for pCR in both the cohorts (Denkert et al. 2010). The pCR rates were 42 % and 40 %, respectively. Tumors with low TIL had pCR rates of 3 and 7 % respectively. In the GeparSixto neoadjuvant study assessing addition of carboplatin to an anthracycline-taxane combination in 580 patients, pCR rates were 76.2 % for LPBC (defined as >60 % of either intratumoral or stromal TILs) compared to 52.2 % for non-LPBC ( $p = 0.01$ ) in those with TNBC (Denkert et al. 2015).

In a meta-analysis including 13 neoadjuvant studies and 3251 patients, TNBC with higher TILs in pretreatment biopsy correlated with higher pCR rates to neoadjuvant chemotherapy (Mao et al. 2014). Greater TIL density was associated with a higher pCR rate for neoadjuvant chemotherapy (OR: 3.93, 95 % CI: 3.26–4.73,  $p < 0.001$ ), including iTILs (OR: 4.15, 95 % CI: 2.95–5.84,  $p < 0.001$ ) or sTILs (OR: 3.58, 95 % CI: 2.50–5.13,  $p < 0.001$ ). Pretreatment TILs had predictive values in ER negative, triple negative and HER2 positive breast cancer patients, but not in ER-positive disease. Therefore, TIL analysis on initial tumor samples serves

as an important predicting factor for pathologic response in TNBC.

In a study of 180 stage II and III breast cancer patients, tumors with Foxp3 and CD8 infiltrates were associated with a high-pCR rate ( $p < 0.001$  and  $p = 0.007$ , respectively) in those who received neo-adjuvant weekly paclitaxel followed by 5-fluorouracil, epirubicin and cyclophosphamide (Oda et al. 2012). Foxp3 infiltrate was a significant independent predictor of pCR ( $p = 0.014$ ), but CD8 infiltrate was not. In another study with 153 tumor samples, high CD8<sup>+</sup> TILs in pretreatment biopsy was found to be an independent predictor of response to neoadjuvant chemotherapy (Seo et al. 2013). These results demonstrate that subpopulations of lymphocytes may also be predictive of response to neoadjuvant chemotherapy, although further studies in larger populations are needed in order to determine whether this provides more accurate prognostic and predictive information than simply evaluating sTILs by conventional hematoxylin and eosin staining.

*TILs and Predicting Response to Trastuzumab:* In the HER2-population, the response to trastuzumab and its association with TILs has been investigated in the neo-adjuvant setting. In the GeparQuattro trial, 156 patient with HER2<sup>+</sup> breast cancer received neoadjuvant trastuzumab with chemotherapy (4 cycles of epirubicin/cyclophosphamide with docetaxel with or without capecitabine); each 10 % increment in TILs was associated with higher rates of pCR (adjusted OR: 1.14, 95 % CI: 1.01–1.29) (Loi et al. 2014a). The neoadjuvant trial GeparSixto, investigated the effect of adding carboplatin to an neoadjuvant anthracycline-taxane combination in 580 patients with triple negative or HER2<sup>+</sup> breast cancer (Denkert et al. 2015); trastuzumab and lapatinib were also given in patients with HER2<sup>+</sup> disease, and bevacizumab to patients with TNBC, which included 25 % of patients who had LPBC (defined as >60 % of either iTILs or sILs). Overall, the pCR rate was significantly higher in the LPBC compared with the non-LPBC group (59.9 vs. 33.8 %,  $p = 0.001$ ). pCR rate were significantly higher for the LPBC group in the absence of platinum (46.6 vs. 33.5 %  $p = 0.05$ )

Author Proof

597  
598  
599  
600  
601  
602  
603  
604  
605  
606  
607  
608  
609  
610  
611  
612  
613  
614  
615  
616  
617  
618  
619  
620  
621  
622  
623  
624  
625  
626  
627  
628  
629  
630  
631  
632  
633  
634  
635  
636  
637  
638  
639  
640  
641  
642  
643  
644



**Table 12.3** Clinical studies of TILs as a biomarker in neoadjuvant therapy of breast cancer

Trial-Author and reference	No. of samples	Method - H&E/IHC	TILs analyzed: i-TILs, s-TILs or t-TILs	Lymphocyte predominant breast cancer	Neoadjuvant Therapy	Survival parameter in High TILs subgroup
All types  Denkert et al. (2010)	1058	H&E	s-TILs and i-TILs	High TILs (>60 %) were seen in 9.5 % patients	GeparDuo cohort: docetaxel with doxorubicin vs doxorubicin/cyclophosphamide followed by docetaxel. GeparTrio cohort: TAC- 6-8 cycles vs four cycles of TAC followed by four cycles of vinorelbine and capecitabine Sequential weekly paclitaxel followed by FEC	<ul style="list-style-type: none"> <li>High TILs/LPBC tumors had pCR of 40 %, compared to pCR of 5 % in tumors without any lymphocyte infiltrate (&lt;0.0005)</li> <li>High pCR rate of 31.3 and 25.7 % was associated with tumors having FOXP3 and CD8 infiltrates (p &lt; 0.001 and p = 0.007, respectively)</li> <li>Breast tumors with both FOXP3 and CD8 infiltrates showed the highest pCR rate of 33.0 % when compared to those without lymphocyte infiltrate</li> </ul>
Oda et al. (2012)	180	IHC- FOXP3 and CD8	i-TILs	Median values used as cut-off. Intratumoral TILs used as continuous variable	Anthracycline- and taxane-based regimen (4 cycles of FEC and 4 cycles of docetaxel)	<ul style="list-style-type: none"> <li>High TILs was an independent predictor for pCR (OR: 4.7, 95 % CI: 2.2–10.06)</li> <li>Higher CD8 infiltrate before and after chemotherapy was associated with pCR (p = 0.037 and p = 0.026, respectively)</li> <li>After neoadjuvant therapy, FOXP3 + cells decreased in patients with pathologic complete responses (pCR), whereas these cells remained elevated in non-responders</li> </ul>
Yamaguchi et al. (2012)	68	H&E, IHC - CD3, CD20	s-TILs and i-TILs	High TIL defined as IHC 2 and 3 by visual grading, were seen in 38 % patients	Anthracycline-based regimen: FEC or CEX; docetaxel was used sequentially with anthracyclines-based chemotherapy. Patients with HER-2-positive: treated with trastuzumab with docetaxel and carboplatin	
Ladoire et al. (2008)	56	IHC - CD3 +, CD8+, FOXP3	i-TILs	Lymphocyte infiltrates were graded (0-3) per IHC		

(continued)

Table 12.3 (continued)

Trial-Author and reference	No. of samples	Method - H&E/IHC	TILs analyzed: i-TILs, s-TILs or t-TILs	Lymphocyte predominant breast cancer	Neoadjuvant Therapy	Survival parameter in High TILs subgroup
Lee et al. (2013)	175	IHC - CD3 +, CD8 +, FOXP3	t-TILs	Used in a continuous scale in 10 % increments by visual grading of IHC	Anthracycline-based regimens (AC), anthracycline and taxane-based regimens (docetaxel and doxorubicin or AC followed by docetaxel), HER2-positive tumors, were treated with Herceptin-based regimens	<ul style="list-style-type: none"> <li>Higher lymphocyte infiltrates of CD8 +, CD3+ or FOXP3+ was a significant independent predictor of pCR (OR: 1.26, p = 0.024)</li> </ul>
Seo et al. (2013)	153	IHC -CD4+, CD8+, and FOXP3 + TILs	i-TILs	High CD4 TIL defined as $\geq 59.67$ /HPF, high CD8 as $\geq 16.33$ /HPF and high FOXP3 as $\geq 6.33$ /HPF	AC, AD or AC followed by docetaxel	<ul style="list-style-type: none"> <li>High CD4 +, CD8 +, and FOXP3 + TILs were associated with a high pCR.</li> <li>Only CD8 + TILs were an independent predictive factor for pCR (OR: 9.786; 95 % CI: 2.12–45.14), irrespective of breast cancer subtype</li> </ul>
Aruga et al. (2009)	87	IHC - FOXP3+	s-TILs and i-TILs	High TILs defined as 6.6 c/HPF, were seen in 50.5 % patients	Anthracycline (FEC or EC) with or without Taxane (Docetaxel or Paclitaxel)	<ul style="list-style-type: none"> <li>Prognosis was better among patients with low numbers of FOXP3-positive cells in tumor. They had a better recurrence-free survival, with risk ratio of 5.81 (95 % CI: 1.09–107.5) compared to high FOXP3-positive cells</li> </ul>
Liu et al. (2012)	132	IHC - FOXP3	s-TILs and i-TILs	Median was taken as the cutoff and samples above the median was considered high	Anthracycline-based regimens: FEC or CEX. Following anthracycline, docetaxel was given to 43 pts	<ul style="list-style-type: none"> <li>Decreased peritumoral Tregs were an independent predictor for pCR</li> <li>High intratumoral Tregs after chemotherapy was associated with unfavorable prognosis- OS (p = 0.001) and PFS (p = 0.006)</li> </ul>

(continued)



**Table 12.3** (continued)

Trial-Author and reference	No. of samples	Method - H&E/IHC	TILs analyzed: i-TILs, s-TILs or t-TILs	Lymphocyte predominant breast cancer	Neoadjuvant Therapy	Survival parameter in High TILs subgroup
TNBC Dieci et al. (2014)	278	H&E	s-TILs and i-TILs	High TILs defined as >60 %, were seen in 9.7 % patients	Anthracycline with or without taxane	<ul style="list-style-type: none"> <li>High TILs versus low TILs (&gt;60 %)               <ul style="list-style-type: none"> <li>5 yr OS—91 versus 55 %</li> <li>HR: 0.19, 95 % CI: 0.06–0.6</li> </ul> </li> <li>High TILs versus Low TILs (&gt;50 %)               <ul style="list-style-type: none"> <li>pCR = 37 versus 16 %, <math>p = 0.05</math></li> </ul> </li> </ul>
Ono et al. (2012)	92	H&E, IHC	s-TILs and i-TILs	High TILs (>50 %) were seen in 73 % patients	Regimens with anthracycline, taxane or both	<ul style="list-style-type: none"> <li>In the LPBC/High TILs group, the addition of carboplatin to anthracycline-plus-taxane showed a high pCR of 74 %</li> </ul>
Denkert et al. (2015)	314	H&E	s-TILs and i-TILs	High TILs (>60 %) were seen in 28.3 % patients	Anthracycline and taxane, with or without carboplatin	<ul style="list-style-type: none"> <li>For each 10 % increment in TILs, higher rates of pCR were seen after neoadjuvant therapy</li> <li>For High versus Low TILs               <ul style="list-style-type: none"> <li>Adjusted OR: 1.14, 95 % CI: 1.01–1.29</li> </ul> </li> </ul>
HER2 + Loi et al. (2014a)	156	H&E	t-TILs	TILs used as a continuous variable, no cut-off used	Trastuzumab with chemotherapy (epirubicin/cyclophosphamide with docetaxel with or without capecitabine)	<ul style="list-style-type: none"> <li>In the LPBC/High TILs group, the addition of carboplatin to anthracycline-plus-taxane showed a pCR of 78 %</li> </ul>
Denkert et al. (2015)	266	H&E	s-TILs and i-TILs	High TILs (>60 %) were seen in 19.9 % patients	Anthracycline and taxane, with or without carboplatin	<ul style="list-style-type: none"> <li>Every 1 % increase in TILs was associated with a 3 % decrease in rate of event (pCR and EFS)               <ul style="list-style-type: none"> <li>HR:0.97, 95 % CI: 0.95–0.99</li> </ul> </li> <li>TILs greater than 5 % were prognostic for pCR               <ul style="list-style-type: none"> <li>OR: 2.60, 95 % CI: 1.26–5.39</li> </ul> </li> </ul>
Salgado et al. (2015a)	387	H&E	s-TILs	TILs used as a continuous variable, no cut-off used	Trastuzumab, lapatinib or combination ×6 weeks followed by weekly taxol ×12, followed by FEC	<ul style="list-style-type: none"> <li>TILs greater than 5 % were prognostic for pCR               <ul style="list-style-type: none"> <li>OR: 2.60, 95 % CI: 1.26–5.39</li> </ul> </li> </ul>

(continued)

**Table 12.3** (continued)

	Trial-Author and reference	No. of samples	Method - H&E/IHC	TILs analyzed: i-TILs, s-TILs or t-TILs	Lymphocyte predominant breast cancer	Neoadjuvant Therapy	Survival parameter in High TILs subgroup
HER2-	Issa-Nummer et al. (2013)	313	H&E	s-TILs and i-TILs	High TILs ( $\geq 60\%$ ) were seen in 26.2% patients	Epirubicin, cyclophosphamide followed by Docetaxel and Bevacizumab	<ul style="list-style-type: none"> <li>Every 10% increase in lymphocytic infiltrate was associated with an improvement in pCR</li> <li>For High versus low TILs (<math>&gt;60\%</math>) – pCR was 36.6 versus 14.3%</li> </ul>
ER-/PR-	West et al. (2011)	113	IHC for CD3, CD8, CD4, gene expression	t-TILs	Median values of TILs markers used as cut-offs	FEC $\times 6$ cycles or TET (docetaxel $\times 3$ cycles followed by docetaxel plus epirubicin $\times 3$ cycles)	<ul style="list-style-type: none"> <li>For High versus low TILs (median) – pCR = 74% vs 31%, OR: 6.33, 95% CI: 2.49 - 16.08</li> </ul>
ER +/PR+	Chan et al. (2012)	Unable to locate article	IHC	t-TILs, CD8+/ Treg ratio	No cut-offs used	Steroidal aromatase inhibitor (AI) therapy	<ul style="list-style-type: none"> <li>Significant increase in the CD8+/ Treg ratio was detected in responders (<math>p = 0.028</math>) to neo-adjuvant endocrine therapy but not in non-responders</li> </ul>

*TILs* Tumor infiltrating lymphocytes; *sTILs* Stromal tumor infiltrating lymphocytes; *iTILs* Intratumoral tumor infiltrating lymphocytes; *tTILs* Total tumor infiltrating lymphocytes; H&E: Hematoxylin and eosin; *IHC* Immunohistochemistry; *CI* Confidence interval; *OR* Odds ratio; *OS* Overall survival; *HR* Hazards ratio; *pCR* Pathological complete response; *PFS* Progression free survival; *EFS* Event free survival; *LPBC* Lymphocyte predominant breast cancer; *FOXP3* Forkhead box P3; *TNBC* Triple negative breast cancer; *HER2* Human epidermal growth factor receptor 2; *AC* Doxorubicin and Cyclophosphamide; *FEC* 5-Fluorouracil, Epirubicin and Cyclophosphamide; *EC* Epirubicin and Cyclophosphamide; *CYC* Cyclophosphamide; *CAP* Capecitabine, Epirubicin and Cyclophosphamide; *TAC* Docetaxel, Doxorubicin, and Cyclophosphamide; *AD* Doxorubicin and docetaxel







**Table 12.4** Summary of key points and major conclusions

*Key points*

1. TIL density is a prognostic and predictive biomarker for TNBC and HER2+ breast cancer
2. Stromal TIL are a better predictor of clinical outcomes than intratumoral TIL
3. Expert-based guidelines have been developed for characterization of TIL density
4. TIL recruitment and function is influenced by various factors in the microenvironment including cytokines, regulatory cells and coinhibitory ligands expressed by the tumor

and presence of platinum (>75 vs. 38.1 %,  $p < 0.0005$ ). Higher TIL density has also been associated with higher pCR rates after neoadjuvant HER2-directed therapy plus chemotherapy (Salgado et al. 2015a; Denkert et al. 2014, 2015).

In a pooled meta-analysis of 13 published studies with 3555 patients, high level of TILs in pretreatment biopsy indicated higher pCR rates to neoadjuvant chemotherapy in TNBC and HER2+ breast cancer. The correlation of pCR with TILs was not seen in hormone receptor positive [HR+/HER2-] disease (Mao et al. 2014). High CD8+ T-lymphocytes in samples pre- (OR: 3.36; 95 % CI: 1.15–9.85) or post-neoadjuvant chemotherapy (OR: 4.71; 95 % CI: 1.29–17.27) was associated with a higher pCR. In the HER2+ group, high TILs not only predict a favorable response to neoadjuvant trastuzumab, but also to chemotherapy. Study of TILs and its response to chemotherapy in 368 pretreatment tissues from two ER negative cohorts (EORTC 10994 and BIG 00-01) (West et al. 2011), showed that high level of CD8+ TIL was an independent predictor of anthracycline response.

*TILs and Predicting Response to Endocrine Therapy:* The status of TILs following endocrine therapy is not clearly defined. In a study of patients with ER+ breast cancer treated with neoadjuvant steroidal aromatase inhibitor (AI) therapy, changes in CD8+ T cells/Foxp3+ or T regulatory cells ratio before and after therapy correlated with response. A significant increase in the CD8+/Treg ratio was detected after hormonal therapy in responders ( $p = 0.028$ ) but not in nonresponders (Chan et al. 2012). Thus, the CD8+/Treg ratio in surgical pathology specimens can be a potential surrogate marker for predicting responses to neoadjuvant endocrine therapy.

*TILs in Residual Cancer after Neoadjuvant Chemotherapy and Prognosis:* In a retrospective study of 304 TNBC patients with residual disease after primary neoadjuvant chemotherapy, the presence of TIL in residual tumor was associated with better prognosis (Dicci et al. 2014). Both sTILs and iTILs were strong prognostic factors for metastases free survival and OS. The 5-year OS rate was 91 % for high TILs and 55 % for low TILs subgroup (HR: 0.19, 95 % CI: 0.06–0.61). The prognostic impact of TILs was most significant in patients with large tumor burden (>2 cm) or lymph node metastases.

**12.8 Conclusion**

The key points described in this chapter are summarized in Table 12.4. First, TIL density is a prognostic biomarker, and also a predictive biomarker for response to neoadjuvant chemotherapy in TNBC and HER2 positive breast cancer. Second, characterization of sTIL density is a more practical and reproducible biomarker than iTILs, and expert-based guidelines have been developed for characterization of TIL density. Third, TIL recruitment and function is influenced by various factors in the microenvironment. Further research is needed to evaluate in detail the composition of TIL, and their subclasses in the tumor microenvironment. In case of T cells their composition, T cell receptor repertoire, neoantigens being identified by the T cells and the presence of costimulatory or coinhibitory molecules needs to be further elucidated. Additional research is also needed in order to determine TILs provide prognostic in metastatic breast cancer, or predict better response to vaccines or immune checkpoint blockade.

Author Proof

650  
651  
652  
653  
654  
655  
656  
657  
658  
659  
660  
661  
662  
663  
664  
665  
666  
667  
668  
669  
670  
671  
672  
673  
674  
675  
676  
677  
678  
679  
680  
681  
682  
683  
684  
685  
686  
687

688  
689  
690  
691  
692  
693  
694  
695  
696  
697  
698  
699  
  
700  
701  
  
702  
703  
704  
705  
706  
707  
708  
709  
710  
711  
712  
713  
714  
715  
716  
717  
718  
719  
720  
721  
722  
723



References

724 lymphocytes in two phase III randomized adjuvant 783  
725 breast cancer trials. *Ann Oncol* 26(8):1698–1704 784

726 Adams S, Gray RJ, Demaria S et al (2014) Prognostic 785  
727 value of tumor-infiltrating lymphocytes in 786  
728 triple-negative breast cancers from two phase III 787  
729 randomized adjuvant breast cancer trials: ECOG 2197 788  
730 and ECOG 1199. *J Clin Oncol* 32(27):2959–2966 789

731 Alexandrov LB, Nik-Zainal S, Wedge DC et al (2013) 790  
732 Signatures of mutational processes in human cancer. 791  
733 *Nature* 500(7463):415–421 792

734 Aruga T, Suzuki E, Saji S et al (2009) A low number of 793  
735 tumor-infiltrating FOXP3-positive cells during pri- 794  
736 mary systemic chemotherapy correlates with favorable 795  
737 anti-tumor response in patients with breast cancer. 796  
738 *Oncol Rep* 22(2):273–278 797

739 Bloom HJ, Richardson WW, Field JR (1970) Host 798  
740 resistance and survival in carcinoma of breast: a study 799  
741 of 104 cases of medullary carcinoma in a series of 800  
742 1,411 cases of breast cancer followed for 20 years. *Br 801  
743 Med J* 3(5716):181–188 802

744 Chan MS, Wang L, Felizola SJ et al (2012) Changes of 803  
745 tumor infiltrating lymphocyte subtypes before and 804  
746 after neoadjuvant endocrine therapy in estrogen 805  
747 receptor-positive breast cancer patients—an immuno- 806  
748 histochemical study of Cd8+ and Foxp3+ using double 807  
749 immunostaining with correlation to the 808  
750 pathobiological response of the patients. *Int J Biol 809  
751 Markers* 27(4):e295–e304 810

752 Chen LJ, Sun J, Wu HY et al (2011) B7-H4 expression 811  
753 associates with cancer progression and predicts 812  
754 patient’s survival in human esophageal squamous cell 813  
755 carcinoma. *Cancer Immunol Immunother* 60(7):1047– 814  
756 1055 815

757 Cortazar P, Geyer CE Jr (2015) Pathological complete 816  
758 response in neoadjuvant treatment of breast cancer. 817  
759 *Ann Surg Oncol* 22(5):1441–1446 818

760 Denkert C, Loibl S, Noske A et al (2010) 819  
761 Tumor-associated lymphocytes as an independent 820  
762 predictor of response to neoadjuvant chemotherapy 821  
763 in breast cancer. *J Clin Oncol* 28(1):105–113 822

764 Denkert C, Loibl S, Salat C et al (2014) Abstract S1-06: 823  
765 Increased tumor-associated lymphocytes predict benefit 824  
766 from addition of carboplatin to neoadjuvant 825  
767 therapy for triple-negative and HER2-positive early 826  
768 breast cancer in the GeparSixto trial (GBG 66). *Cancer 827  
769 Res* 73(24 Supplement):S1-06–S01-06 828

770 Denkert C, von Minckwitz G, Brase JC et al (2015) 829  
771 Tumor-infiltrating lymphocytes and response to 830  
772 neoadjuvant chemotherapy with or without Carbo- 831  
773 platin in human epidermal growth factor receptor 832  
774 2-positive and triple-negative primary breast cancers. 833  
775 *J Clin Oncol* 33(9):983–991 834

776 Dieci MV, Criscitello C, Goubar A et al (2014) 835  
777 Prognostic value of tumor-infiltrating lymphocytes 836  
778 on residual disease after primary chemotherapy for 837  
779 triple-negative breast cancer: a retrospective multicen- 838  
780 ter study. *Ann Oncol* 25(3):611–618 839

781 Dieci MV, Mathieu MC, Guarneri V et al (2015) 840  
782 Prognostic and predictive value of tumor infiltrating 841  
842 lymphocytes in two phase III randomized adjuvant 843  
breast cancer trials. *Ann Oncol* 26(8):1698–1704 844

Dunn GP, Old LJ, Schreiber RD (2004) The three Es of 845  
cancer immunoediting. *Annu Rev Immunol* 22:329– 846  
360 847

Fisher B, Bryant J, Wolmark N et al (1998) Effect of 848  
preoperative chemotherapy on the outcome of women 849  
with operable breast cancer. *J Clin Oncol* 16(8):2672– 850  
2685 851

Groh V, Wu J, Yee C, Spies T (2002) Tumour-derived 852  
soluble MIC ligands impair expression of NKG2D and 853  
T-cell activation. *Nature* 419(6908):734–738 854

Issa-Nummer Y, Darb-Esfahani S, Loibl S et al (2013) 855  
Prospective validation of immunological infiltrate for 856  
prediction of response to neoadjuvant chemotherapy 857  
in HER2-negative breast cancer—a substudy of the 858  
neoadjuvant GeparQuinto trial. *PLoS ONE* 8(12): 859  
e79775 860

Janakiram M, Abadi YM, Sparano JA, Zang X (2012) T 861  
cell coinhibition and immunotherapy in human breast 862  
cancer. *Discov Med* 14(77):229–236 863

Janakiram M, Chinai J, Fineberg S et al (2014) Expres- 864  
sion, clinical significance, and receptor identification 865  
of the newest B7 family member HHLA2 protein. *Clin 866  
Cancer Res* 21(10):2359–2366 867

Jiang X, Shapiro DJ (2014) The immune system and 868  
inflammation in breast cancer. *Mol Cell Endocrinol* 869  
382(1):673–682 870

Ladoire S, Arnould L, Apetoh L et al (2008) Pathologic 871  
complete response to neoadjuvant chemotherapy of 872  
breast carcinoma is associated with the disappearance 873  
of tumor-infiltrating foxp3+ regulatory T cells. *Clin 874  
Cancer Res* 14(8):2413–2420 875

Lakhani SR, Jacquemier J, Sloane JP et al (1998) 876  
Multifactorial analysis of differences between sporadic 877  
breast cancers and cancers involving BRCA1 and 878  
BRCA2 mutations. *J Natl Cancer Inst* 90(15):1138– 879  
1145 880

Lee HJ, Seo JY, Ahn JH, Ahn SH, Gong G (2013) 881  
Tumor-associated lymphocytes predict response to 882  
neoadjuvant chemotherapy in breast cancer patients. 883  
*J Breast Cancer* 16(1):32–39 884

Liu F, Li Y, Ren M et al (2012) Peritumoral FOXP3(+) 885  
regulatory T cell is sensitive to chemotherapy while 886  
intratumoral FOXP3(+) regulatory T cell is prognostic 887  
predictor of breast cancer patients. *Breast Cancer Res 888  
Treat* 135(2):459–467 889

Liu S, Foulkes WD, Leung S et al (2014) Prognostic 890  
significance of FOXP3 + tumor-infiltrating lympho- 891  
cytes in breast cancer depends on estrogen receptor 892  
and human epidermal growth factor receptor-2 expres- 893  
sion status and concurrent cytotoxic T-cell infiltration. 894  
*Breast Cancer Res* 16(5):432 895

Loi S, Sirtaine N, Piette F et al (2013) Prognostic and 896  
predictive value of tumor-infiltrating lymphocytes in a 897  
phase III randomized adjuvant breast cancer trial in 898  
node-positive breast cancer comparing the addition of 899  
docetaxel to doxorubicin with doxorubicin-based 900  
chemotherapy: BIG 02-98. *J Clin Oncol* 31(7):860– 901  
867 902

Author Proof



Author Proof

843 Loi S, Michiels S, Salgado R et al (2014a) Tumor  
844 infiltrating lymphocytes (TILs) indicate trastuzumab  
845 benefit in early-stage HER2-positive breast cancer  
846 (HER2 + BC). *Cancer Res* 73(24 Supplement)  
847  
848 Loi S, Michiels S, Salgado R et al (2014b) Tumor  
849 infiltrating lymphocytes are prognostic in triple neg-  
850 ative breast cancer and predictive for trastuzumab  
851 benefit in early breast cancer: results from the FinHER  
852 trial. *Ann Oncol* 25(8):1544–1550  
853  
854 Mao Y, Qu Q, Zhang Y, Liu J, Chen X, Shen K (2014)  
855 The value of tumor infiltrating lymphocytes (TILs) for  
856 predicting response to neoadjuvant chemotherapy in  
857 breast cancer: a systematic review and meta-analysis.  
858 *PLoS ONE* 9(12):e115103  
859  
860 Maria Vittoria Dieci AG, Marie-Christine Mathieu,  
861 Valentina Guarneri, Pier Franco Conte, Suzette,  
862 Delalogue FA (2014) Prognostic and predictive value  
863 of tumor infiltrating lymphocytes (TIL) in two phase  
864 III randomized adjuvant breast cancer (BC) trials.  
865 *J Clin Oncol* 32(5s) [suppl; abstr 11087]  
866  
867 Miyatake T, Tringler B, Liu W et al (2007) B7-H4  
868 (DD-O110) is overexpressed in high risk uterine  
869 endometrioid adenocarcinomas and inversely corre-  
870 lated with tumor T-cell infiltration. *Gynecol Oncol*  
871 106(1):119–127  
872  
873 Moore OS Jr, Foote FW Jr (1949) The relatively favorable  
874 prognosis of medullary carcinoma of the breast.  
875 *Cancer* 2(4):635–642  
876  
877 Muenst S, Soysal SD, Gao F, Obermann EC, Oertli D,  
878 Gillanders WE (2013) The presence of programmed  
879 death 1 (PD-1)-positive tumor-infiltrating lympho-  
880 cytes is associated with poor prognosis in human  
881 breast cancer. *Breast Cancer Res Treat* 139(3):667–  
882 676  
883  
884 Oda N, Shimazu K, Naoi Y et al (2012) Intratumoral  
885 regulatory T cells as an independent predictive factor  
886 for pathological complete response to neoadjuvant  
887 paclitaxel followed by  
888 5-FU/epirubicin/cyclophosphamide in breast cancer  
889 patients. *Breast Cancer Res Treat* 136(1):107–116  
890  
891 Ohaegbulam KC, Assal A, Lazar-Molnar E, Yao Y,  
892 Zang X (2015) Human cancer immunotherapy with  
893 antibodies to the PD-1 and PD-L1 pathway. *Trends*  
894 *Mol Med* 21(1):24–33  
895  
896 Ono M, Tsuda H, Shimizu C et al (2012)  
897 Tumor-infiltrating lymphocytes are correlated with  
898 response to neoadjuvant chemotherapy in  
899 triple-negative breast cancer. *Breast Cancer Res Treat*  
900 132(3):793–805  
901  
902 Perez EA BK, Anderson SK, Thompson EA, Badve SS,  
903 Bailey H, Baehner FL (2014) Stromal  
904 tumor-infiltrating lymphocytes(S-TILs). In: The alli-  
905 ance N9831 trial S-TILs are associated with  
906 chemotherapy benefit but not associated with traste-  
907 zumab benefit. Paper presented at the San Antonio  
908 Breast Cancer Symposium  
909  
910 Pickup MW, Mouw JK, Weaver VM (2014) The  
911 extracellular matrix modulates the hallmarks of  
912 cancer. *EMBO Rep* 15(12):1243–1253  
913  
914 Prowell TM, Pazdur R (2012) Pathological complete  
915 response and accelerated drug approval in early breast  
916 cancer. *N Engl J Med* 366(26):2438–2441  
917  
918 Quezada SA, Peggs KS, Simpson TR, Allison JP (2011)  
919 Shifting the equilibrium in cancer immunoediting:  
920 from tumor tolerance to eradication. *Immunol Rev* 241  
921 (1):104–118  
922  
923 Richardson WW (1956) Medullary carcinoma of the  
924 breast; a distinctive tumour type with a relatively good  
925 prognosis following radical mastectomy. *Br J Cancer*  
926 10(3):415–423  
927  
928 Rizvi NA, Hellmann MD, Snyder A et al (2015)  
929 Mutational landscape determines sensitivity to PD-1  
930 blockade in non-small cell lung cancer. *Science* 348  
931 (6230):124–128  
932  
933 Sagiv JY, Michaeli J, Assi S et al (2015) Phenotypic  
934 diversity and plasticity in circulating neutrophil sub-  
935 populations in cancer. *Cell Rep* 10(4):562–573  
936  
937 Salgado R, Denkert C, Campbell C et al (2015a)  
938 Tumor-infiltrating lymphocytes and associations with  
939 pathological complete response and event-free sur-  
940 vival in her2-positive early-stage breast cancer treated  
941 with lapatinib and trastuzumab: a secondary analysis  
942 of the neoalto trial. *JAMA Oncology* 1(4):448–454  
943  
944 Salgado R, Denkert C, Demaria S et al (2015b) The  
945 evaluation of tumor-infiltrating lymphocytes (TILs) in  
946 breast cancer: recommendations by an International  
947 TILs Working Group 2014. *Ann Oncol* 26(2):259–  
948 271  
949  
950 Seo AN, Lee HJ, Kim EJ et al (2013) Tumour-infiltrating  
951 CD8 + lymphocytes as an independent predictive  
952 factor for pathological complete response to primary  
953 systemic therapy in breast cancer. *Br J Cancer* 109  
954 (10):2705–2713  
955  
956 Smith IC, Heys SD, Hutcheon AW et al (2002) Neoad-  
957 juvant chemotherapy in breast cancer: significantly  
958 enhanced response with docetaxel. *J Clin Oncol* 20  
959 (6):1456–1466  
960  
961 Sun S, Fei X, Mao Y et al (2014) PD-1(+) immune cell  
962 infiltration inversely correlates with survival of oper-  
963 able breast cancer patients. *Cancer Immunol Immun-*  
964 *other* 63(4):395–406  
965  
966 Symmans WF, Peintinger F, Hatzis C et al (2007)  
967 Measurement of residual breast cancer burden to  
968 predict survival after neoadjuvant chemotherapy. *J Clin Oncol* 25(28):4414–4422  
969  
970 Tan W, Zhang W, Strasner A et al (2011)  
971 Tumour-infiltrating regulatory T cells stimulate mam-  
972 mmary cancer metastasis through RANKL-RANK sig-  
973 nalling. *Nature* 470(7335):548–553  
974  
975 Telli ML, Jensen KC, Vinayak S et al (2015) Phase II  
976 study of gemcitabine, carboplatin, and iniparib as  
977 neoadjuvant therapy for triple-negative and BRCA1/2  
978 mutation-associated breast cancer with assessment of a  
979 tumor-based measure of genomic instability: PreCOG  
980 0105. *J Clin Oncol* 33(17):1895–1901  
981  
982 Thomas DA, Massague J (2005) TGF-beta directly targets  
983 cytotoxic T cell functions during tumor evasion of  
984 immune surveillance. *Cancer Cell* 8(5):369–380  
985  
986

AO3



961 Villablanca EJ, Raccosta L, Zhou D et al (2010) chemotherapy in estrogen receptor-negative breast 974  
962 Tumor-mediated liver X receptor-alpha activation cancer. *Breast Cancer Res* 13(6):R126 975  
963 inhibits CC chemokine receptor-7 expression on 976  
964 dendritic cells and dampens antitumor responses. *Nat*  
965 *Med* 16(1):98–105 977  
966 Weiss VL, Lee TH, Song H et al (2012) Trafficking of Yamaguchi R, Tanaka M, Yano A et al (2012) 976  
967 high avidity HER-2/neu-specific T cells into Tumor-infiltrating lymphocytes are important patho- 977  
968 HER-2/neu-expressing tumors after depletion of logic predictors for neoadjuvant chemotherapy in 978  
969 effector/memory-like regulatory T Cells. *PLoS ONE* patients with breast cancer. *Hum Pathol* 43 979  
970 7(2):e31962 (10):1688–1694 980  
971 West NR, Milne K, Truong PT, Macpherson N, Nel- Zhang L, Wu H, Lu D et al (2013) The costimulatory 981  
972 son BH, Watson PH (2011) Tumor-infiltrating lympho- molecule B7-H4 promote tumor progression and cell 982  
973 phocytes predict response to anthracycline-based proliferation through translocating into nucleus. *Oncog-*  
983  
984  
985

UNCORRECTED PROOF