

9:00am-9:30am: Arrival / Light Breakfast

9:30am-9:35am: Introduction



9:35am-10:00am: **Ryan Mayers, University of Maryland**  
"The Alzheimer's Disease-linked gene TPCN1 is required for mitochondrial homeostasis in human HAP1 cells"

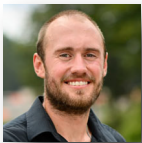


10:00am-10:25am: **Tain Luquez, Columbia University**  
"Cell signatures of resilience to cognitive decline in the presence of alpha-syn and Alzheimer's pathology"

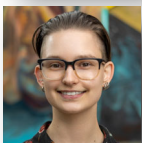


10:25am-10:50am: **Chelsy Eddings, Johns Hopkins University**  
"Ultrastructural membrane dynamics of mouse and human presynapses"

10:50am-11:15am: Coffee Break



11:15am-11:40am: **Isaac Christian, Princeton University**  
"Stimulus encoding and internal task representations modulated by attention and adaptation across macro-scale networks"



11:40am-12:05pm: **Galit Karpov, Rutgers University**  
"Threat Processing and Childhood Maltreatment"

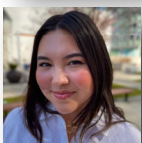
12:05pm-1:15pm: Lunch with Einstein students and postdocs



1:15pm-1:40pm: **Tariq Brown, Brown University**  
"Alcohol-induced Alternative Splicing in Drosophila Memory Circuits"



1:40pm-2:05pm: **Steven Brandt, Boston University**  
"Oscillatory Control of Dendritic Integration in Attention"



2:05pm-2:30pm: **Erica Townsend, Dartmouth College**  
"Dopamine dynamics in the nucleus accumbens"

5:00pm-6:00pm: Happy Hour with Einstein students and postdocs